



U.S. CHAMBER OF COMMERCE

UNITE Summit

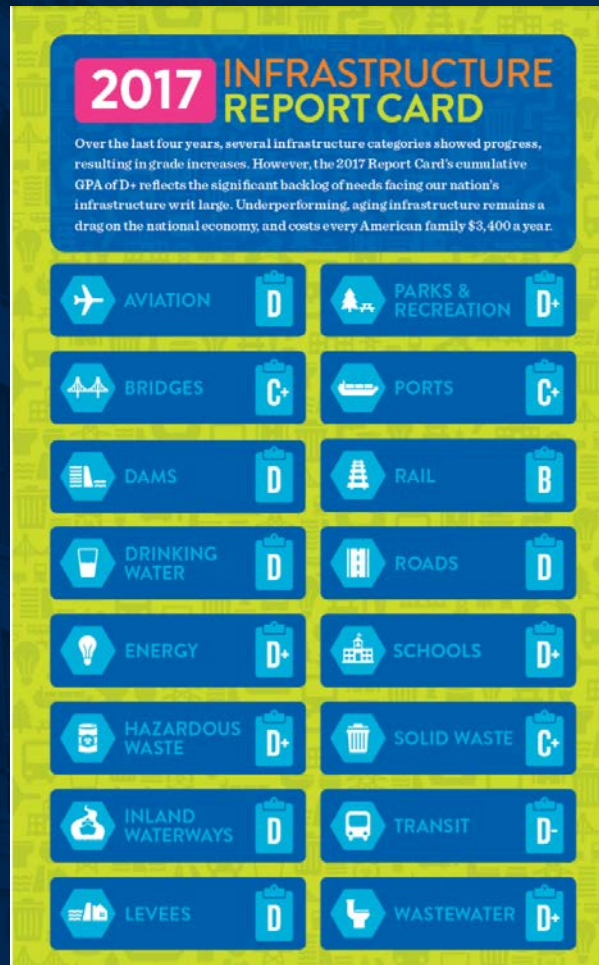
February 28, 2018

America Gets Failing Grade

**AMERICA'S CUMULATIVE
INFRASTRUCTURE GPA**



Overall Grades on Infrastructure



Why **NOW** is the Time to Act:

\$3.7 trillion is the amount needed by 2025 to get America's infrastructure to a B.

\$1.7 trillion is the gap between existing spending and \$3.7 trillion.

\$516 is the annual average cost to a motorist driving on bad roads.

\$3,400 lost per family a year in disposable income from inadequate infrastructure.

Why **NOW** is the Time to Act:

35 minutes is the increase in the average weekly time spent commuting since 1990.

6 billion gallons of treated drinking water are lost every day due to an aged system.

15,498 dams have been identified as having high hazard potential

49% of vessels experience delays across the inland waterway system.

U.S. Chamber Four-Point Plan



1. Investing in our Nation's Surface Infrastructure

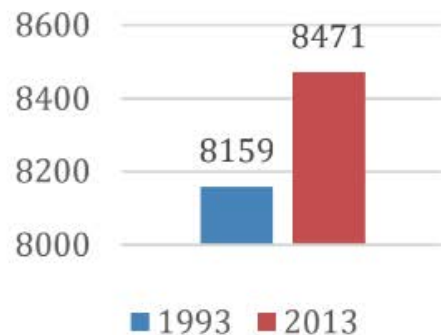
2. Encouraging Public-Private Partnerships

3. Streamlining the Permitting Process

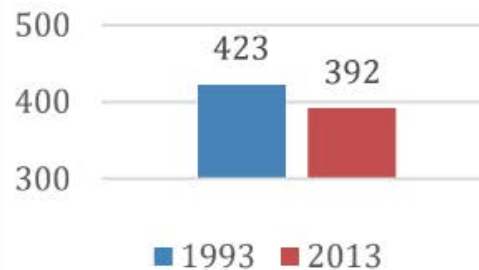
4. Ensuring a Ready Workforce

Investing in Surface Transportation

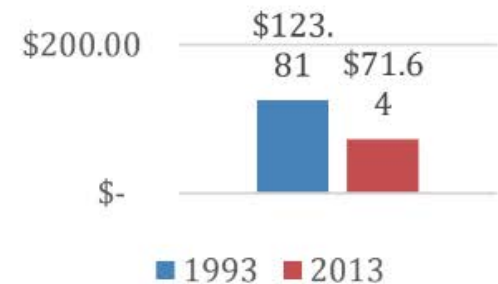
Miles Driven
Per Person



Gallons of Fuel
Consumed Per
Person



Real Per Driver
Federal Fuel User
Fee



Investing in Critical Infrastructure

Innovative Financing Options

- Expand and improve existing federal loan programs covering transportation, water, and rail
- Create a new loan / loan guarantee program
- Remove statutory and regulatory barriers to public-private partnerships
- Expand private activity bonds

Streamlined Permitting

It take an average of **FIVE years** to complete an environmental impact statement

Congress should:

- Set a two year deadline for all federal permitting
- Merge duplicative and sequential reviews
- Require one agency to shepherd the process

Ready Workforce

Seventy-Eight percent of construction companies cannot find the skilled worker they need.

Congress should:

- Modernize America's Apprenticeship System
- Update the long-overdue Perkins Act
- Act now to protect DACA and Temporary Protected Status (TPS) recipients
- Enact comprehensive immigration reform

Share of voters who say it's important that the U.S. modernize our nation's infrastructure system:


ALL VOTERS

81%

A horizontal bar chart for 'ALL VOTERS' showing 81% support. The bar is red, with the percentage '81%' written in white at the start. The rest of the bar is grey.

REPUBLICANS

84%

A horizontal bar chart for 'REPUBLICANS' showing 84% support. The bar is dark teal, with the percentage '84%' written in white at the start. The rest of the bar is grey.

DEMOCRATS

82%

A horizontal bar chart for 'DEMOCRATS' showing 82% support. The bar is medium blue, with the percentage '82%' written in white at the start. The rest of the bar is grey.

INDEPENDENTS

78%

A horizontal bar chart for 'INDEPENDENTS' showing 78% support. The bar is light blue, with the percentage '78%' written in white at the start. The rest of the bar is grey.

Share of voters who support the federal government investing more to modernize our nation's infrastructure system:

ALL VOTERS

75%



REPUBLICANS

79%



DEMOCRATS

73%

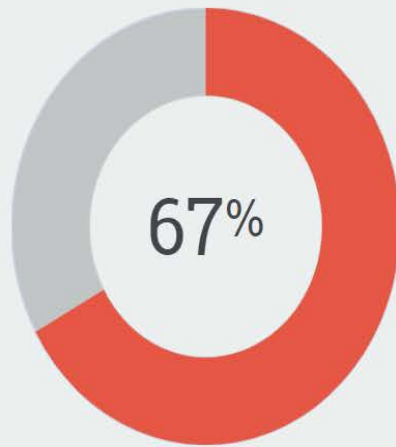


INDEPENDENTS

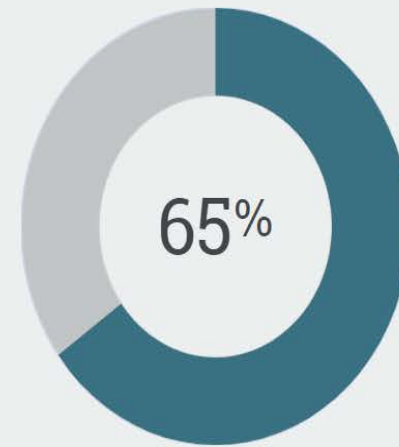
73%



Share of voters who say infrastructure investments will...



Create jobs



Help businesses in the United States

Share of voters who want Congress to move forward with an infrastructure package now:

ALL VOTERS

59%

A horizontal bar chart for 'ALL VOTERS' showing 59% support. The bar is divided into a red segment representing 59% and a gray segment representing the remaining 41%.

REPUBLICANS

63%

A horizontal bar chart for 'REPUBLICANS' showing 63% support. The bar is divided into a teal segment representing 63% and a gray segment representing the remaining 37%.

DEMOCRATS

57%

A horizontal bar chart for 'DEMOCRATS' showing 57% support. The bar is divided into a light blue segment representing 57% and a gray segment representing the remaining 43%.

INDEPENDENTS

56%

A horizontal bar chart for 'INDEPENDENTS' showing 56% support. The bar is divided into a light blue segment representing 56% and a gray segment representing the remaining 44%.

SC-1 Voters Agree

Stronger Infrastructure, Stronger Workforce

74%

OF SC-1 VOTERS AGREE THAT INVESTMENTS IN INFRASTRUCTURE
WOULD LEAD TO JOB CREATION.

SC-1 Voters Want More Federal Investments

66%

OF SC-1 VOTERS SAY THE FEDERAL GOVERNMENT SHOULD INVEST
MORE IN OUR COUNTRY'S ROADS.

ACT NOW

To contact your member of Congress on transportation and infrastructure, as well as access this information and more visit:

www.letsrebuildamerica.com

