

COMMUNITY *Profile*

Beaufort County



S.C. Department of Employment & Workforce

Labor Market Information

1550 Gadsden Street, PO Box 995
Columbia, SC 29202

803.737.2660

www.SCWorkforceInfo.com

Updated: 9/24/2012

Table of Contents

1. Economic Data

Annual Unemployment Rates	1
Monthly Unemployment Rates	2
Unemployment Insurance	3
Demographic Data	3
Industry Data	4
Occupation Data	5
Retail Sales	6

2. Demographic Data

Population	7
Age	7
Race	8
Gender	8
Change	9
Commuting Patterns	10
Residents Commuting To	11
Workers Commuting From	11
Employer Data	12
Size of Establishments	12
Employment by Size of Establishment	12
20 Largest Employers	13

3. Industry Data

Employment by Industry	14
New Startup Firms	15
New Hires by Industry	16
Turnover by Industry	17
Average Annual Wage by Industry	18
Age of Workers by Industry	19
Projections by Industry	20

4. Occupation Data

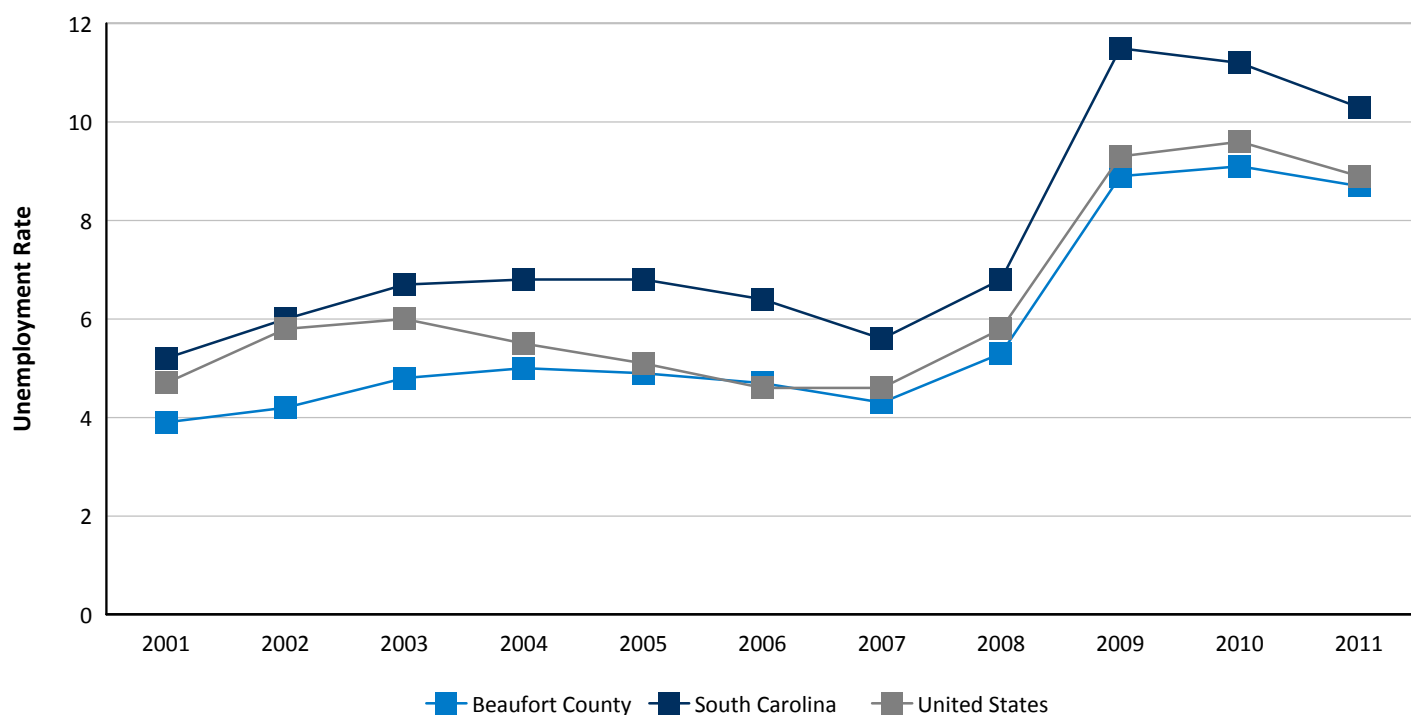
Projections by Occupation	21
Growing Occupations	22
Declining Occupations	23

5. Education Data

Educational Attainment	24
Graduate Trends	25
Educational Institutions	26

Annual Unemployment Rates (Unadjusted)

Trends

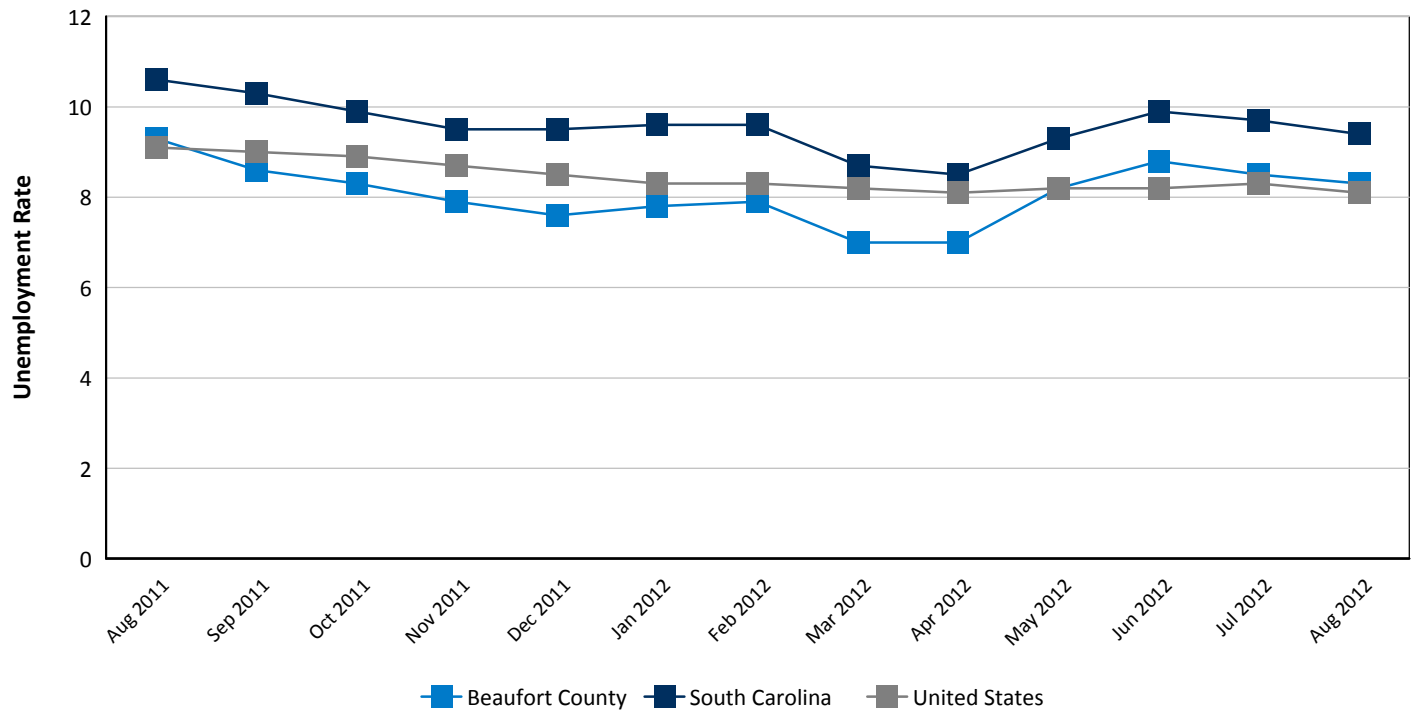


Beaufort County				South Carolina			United States		
Year	Employment	Unemp.	Rate	Employment	Unemp.	Rate	Employment	Unemp.	Rate
2011	58,091	5,532	8.7	1,935,885	221,381	10.3	139,869	13,747	8.9
2010	57,397	5,728	9.1	1,909,414	241,162	11.2	139,064	14,825	9.6
2009	57,173	5,611	8.9	1,903,146	247,611	11.5	139,877	14,265	9.3
2008	60,488	3,367	5.3	2,000,582	145,281	6.8	145,362	8,924	5.8
2007	61,256	2,763	4.3	2,010,252	119,068	5.6	146,047	7,078	4.6
2006	59,786	2,973	4.7	1,970,912	134,123	6.4	144,427	7,001	4.6
2005	58,372	3,009	4.9	1,922,367	139,983	6.8	141,730	7,591	5.1
2004	55,914	2,916	5.0	1,888,050	138,430	6.8	139,252	8,149	5.5
2003	53,259	2,662	4.8	1,854,419	133,257	6.7	137,736	8,774	6.0
2002	51,130	2,242	4.2	1,826,240	115,907	6.0	136,485	8,378	5.8
2001	48,937	1,966	3.9	1,834,871	100,743	5.2	136,933	6,801	4.7

Source: S.C. Department of Employment & Workforce

Monthly Unemployment Rates (Unadjusted)

Past 13 Months



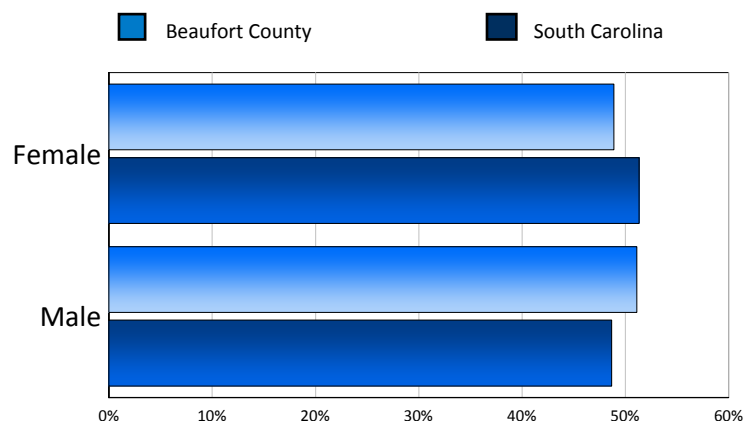
Period	Beaufort County	South Carolina	United States
Aug 2012	8.3	9.4	8.1
Jul 2012	8.5	9.7	8.3
Jun 2012	8.8	9.9	8.2
May 2012	8.2	9.3	8.2
Apr 2012	7.0	8.5	8.1
Mar 2012	7.0	8.7	8.2
Feb 2012	7.9	9.6	8.3
Jan 2012	7.8	9.6	8.3
Dec 2011	7.6	9.5	8.5
Nov 2011	7.9	9.5	8.7
Oct 2011	8.3	9.9	8.9
Sep 2011	8.6	10.3	9.0
Aug 2011	9.3	10.6	9.1

Source: S.C. Department of Employment & Workforce

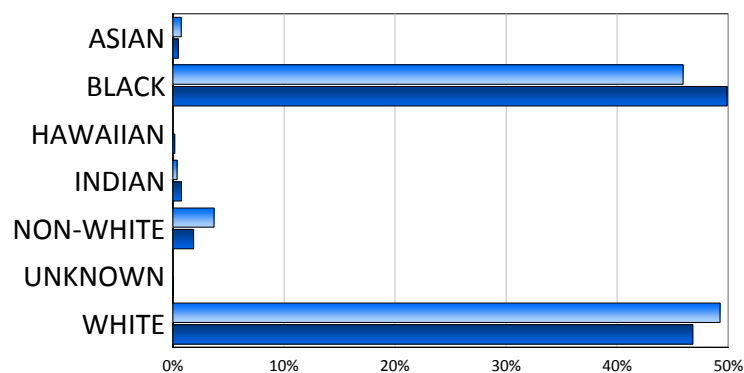
Characteristics of Unemployment Insurance Claimants

August 2012

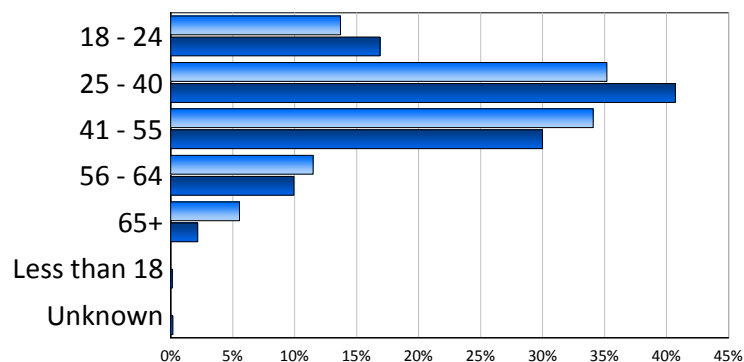
Gender	Beaufort County	South Carolina
Female	132	8,563
Male	138	8,119



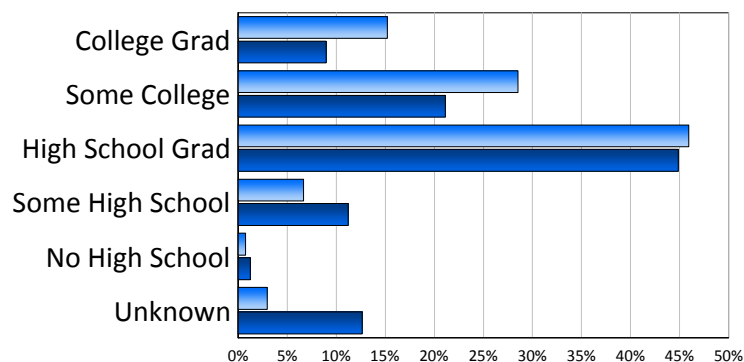
Race	Beaufort County	South Carolina
ASIAN	2	79
BLACK	124	8,323
INDIAN	1	126
NON-WHITE	10	312
WHITE	133	7,812



Age Group	Beaufort County	South Carolina
18 - 24	37	2,816
25 - 40	95	6,794
41 - 55	92	5,005
56 - 64	31	1,657
65+	15	361
Less than 18	0	19
Unknown	0	30



Education	Beaufort County	South Carolina
College Grad	41	1,496
Some College	77	3,520
High School Grad	124	7,484
Some High School	18	1,871
No High School	2	203
Unknown	8	2,108

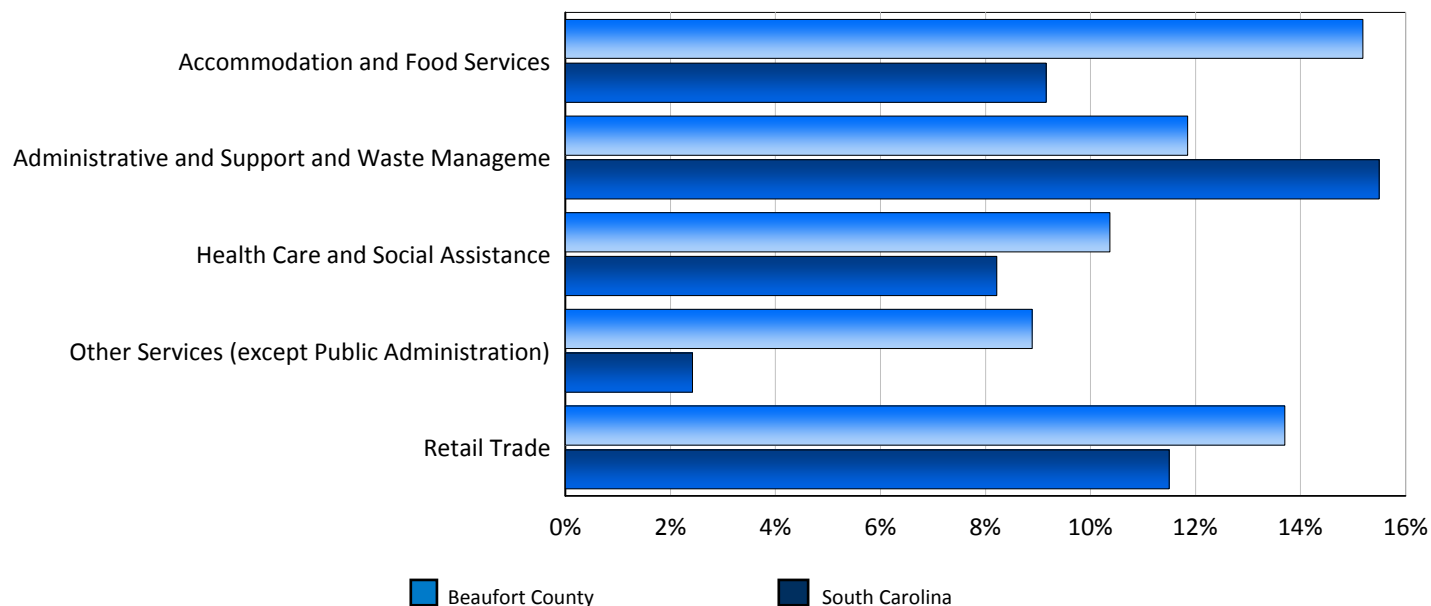


Source: S.C. Department of Employment & Workforce

Characteristics of Unemployment Insurance Claims by Industry

Industry Groups With Largest Number of Claims

August 2012



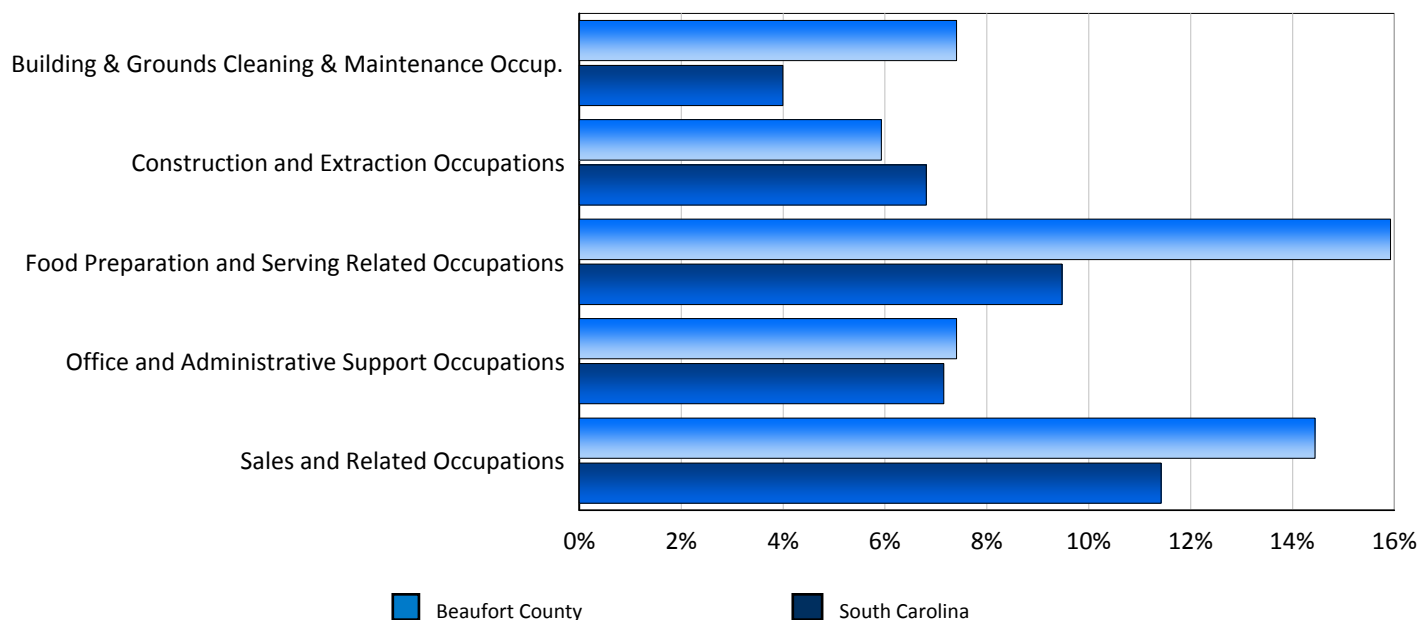
Industry	Beaufort County	South Carolina
Agriculture, Forestry, Fishing and Hunting	1	58
Construction	19	1,026
Manufacturing	7	2,689
Wholesale Trade	9	431
Retail Trade	37	1,920
Transportation and Warehousing	6	368
Information	2	159
Finance and Insurance	4	368
Real Estate and Rental and Leasing	8	216
Professional, Scientific, and Technical Servi	7	540
Management of Companies and Enterprises	2	37
Administrative and Support and Waste Manageme	32	2,588
Educational Services	10	438
Health Care and Social Assistance	28	1,372
Arts, Entertainment, and Recreation	6	170
Accommodation and Food Services	41	1,529
Other Services (except Public Administration)	24	404
Public Administration	5	291
Unknown	22	2,069

Source: S.C. Department of Employment & Workforce

Characteristics of Unemployment Insurance Claims by Occupation

Occupation Groups With Largest Number of Claims

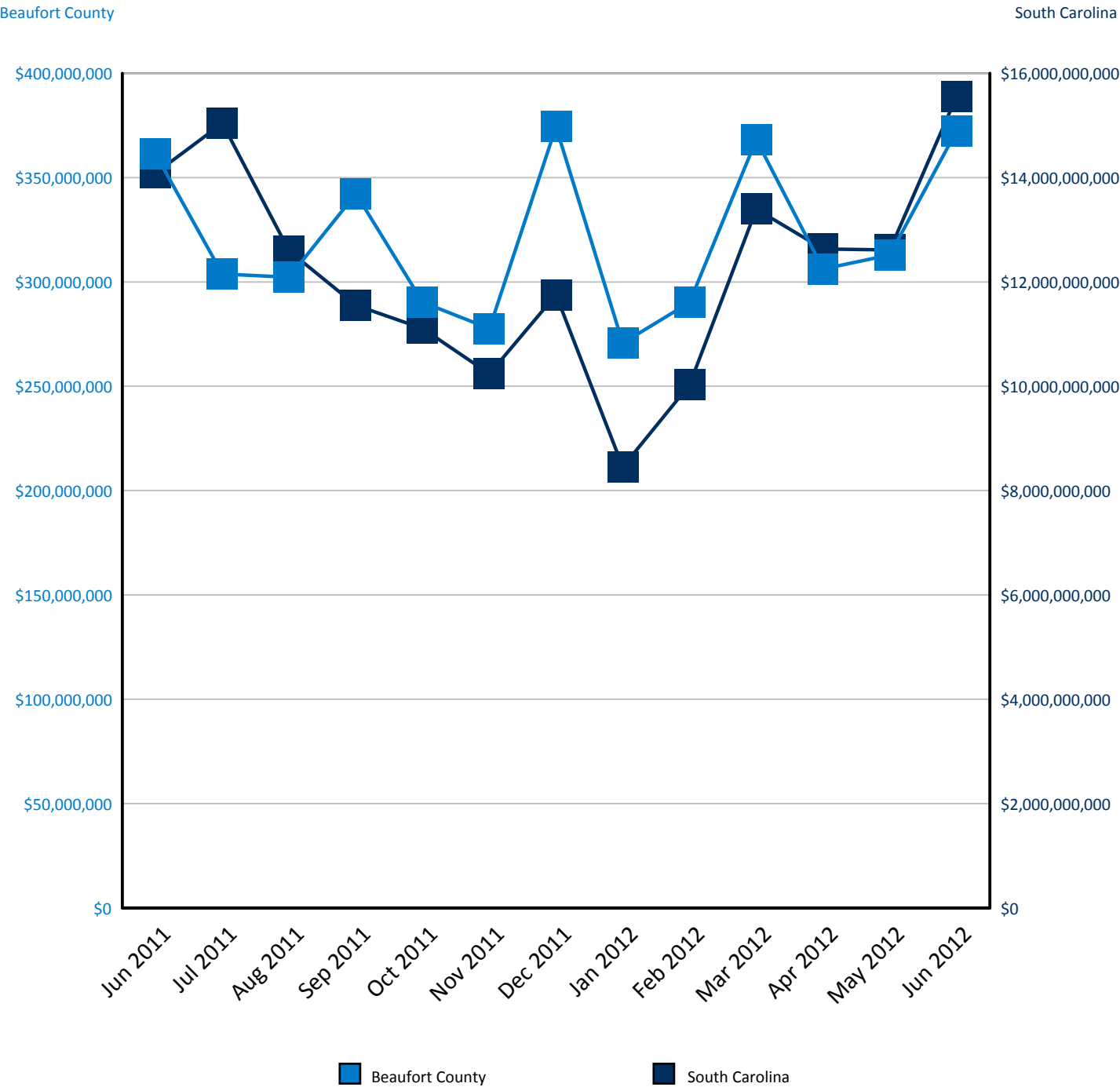
August 2012



Occupation	Beaufort County	South Carolina
Architecture and Engineering Occupations	2	174
Arts, Design, Entertainment, Sports, and Media Occ	4	97
Building & Grounds Cleaning & Maintenance Occup.	20	667
Business and Financial Operations Occupations	7	444
Community and Social Services Occupations	3	141
Construction and Extraction Occupations	16	1,137
Education, Training, and Library Occupations	13	421
Farming, Fishing, and Forestry Occupations	1	90
Food Preparation and Serving Related Occupations	43	1,582
Healthcare Practitioners and Technical Occupations	5	326
Healthcare Support Occupations	13	718
Installation, Maintenance, and Repair Occupations	12	501
Legal Occupations	3	56
Management Occupations	15	830
Military Specific Occupations	8	136
Office and Administrative Support Occupations	20	1,195
Personal Care and Service Occupations	10	278
Production Occupations	7	3,145
Protective Service Occupations	4	209
Sales and Related Occupations	39	1,907
Transportation and Material Moving Occupations	13	654
Unknown	12	1,808

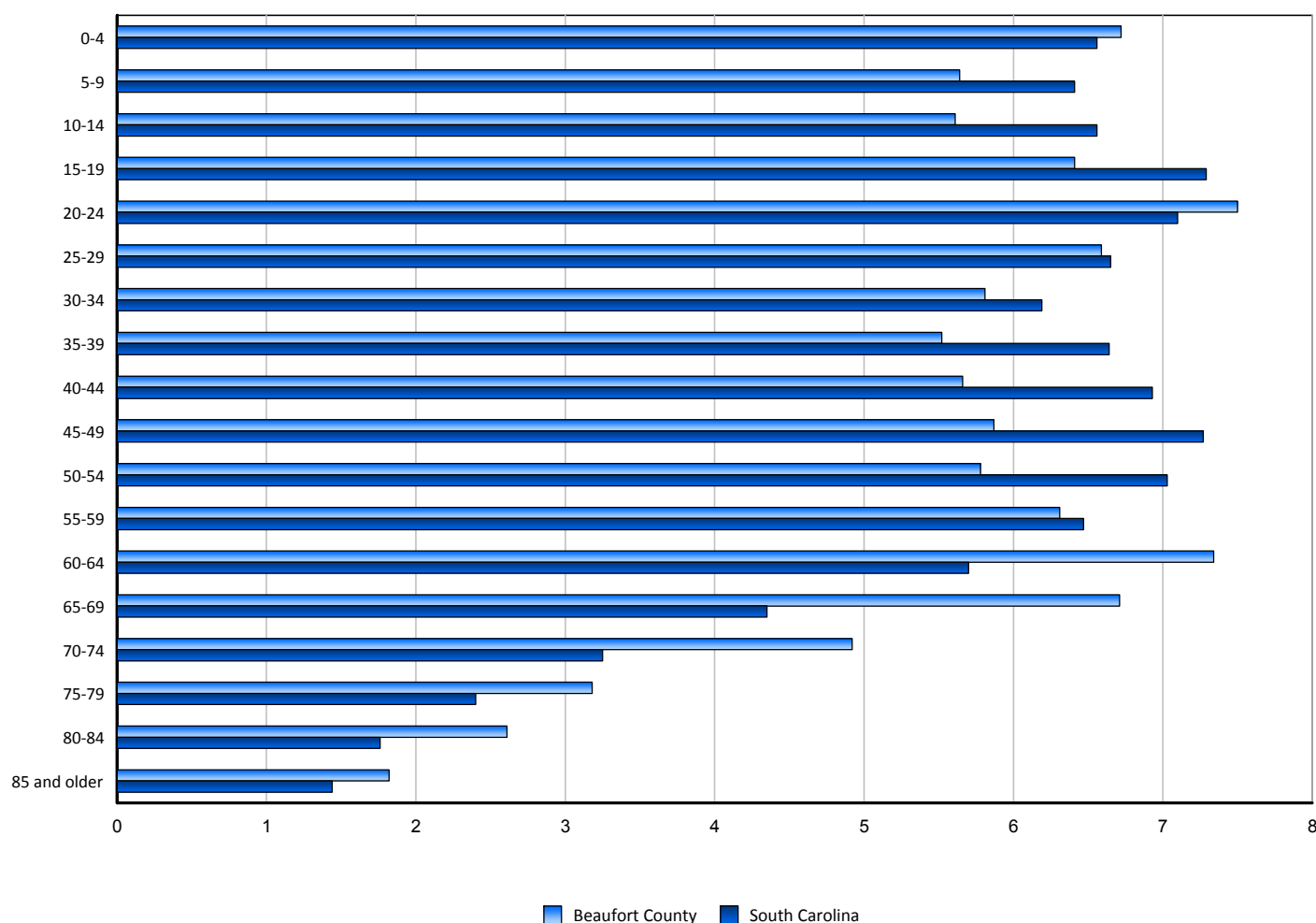
Source: S.C. Department of Employment & Workforce

Retail Sales



Source: S.C. Department of Revenue

Population by Age



Age Range	Beaufort County	South Carolina	United States
0-4	10,448	295,906	20,131,420
5-9	8,777	289,115	20,116,654
10-14	8,731	295,992	20,643,730
15-19	9,977	328,669	22,132,691
20-24	11,664	320,364	21,214,118
25-29	10,250	299,934	20,712,949
30-34	9,042	279,462	19,478,064
35-39	8,579	299,633	20,629,102
40-44	8,807	312,774	21,577,039
45-49	9,138	328,164	22,770,506
50-54	8,994	317,084	21,532,191
55-59	9,812	291,901	18,817,728
60-64	11,416	256,994	15,459,667
65-69	10,433	196,138	11,518,053
70-74	7,650	146,520	8,975,414
75-79	4,942	108,482	7,358,170
80-84	4,057	79,297	5,721,633
85 and older	2,833	64,999	5,176,143
Total	155,550	4,511,428	303,965,272

Source: U.S. Census Bureau, American Community Survey

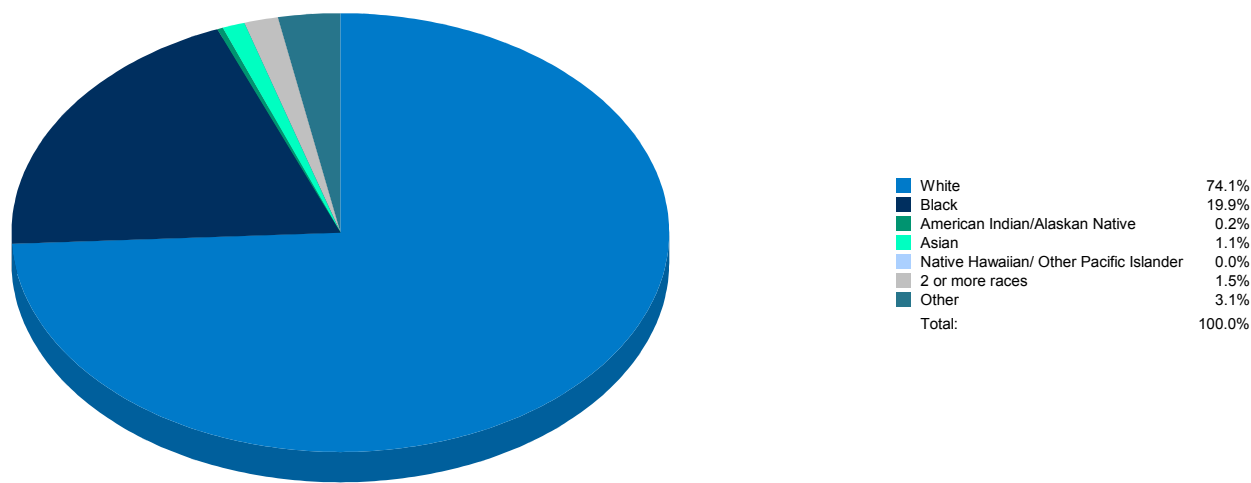
2010 5-Year Estimates

Population by Race

Race	Beaufort County	%	South Carolina	%	United States	%
White	115,239	74.08	3,034,000	67.25	224,895,700	73.99
Black	31,006	19.93	1,269,484	28.14	37,978,752	12.49
American Indian/Alaskan Native	335	0.22	14,095	0.31	2,480,465	0.82
Asian	1,649	1.06	54,288	1.20	14,185,493	4.67
Native Hawaiian/ Other Pacific Islander	47	0.03	2,053	0.05	491,673	0.16
2 or more races	2,398	1.54	66,819	1.48	7,329,381	2.41
Other	4,876	3.13	70,689	1.57	16,603,808	5.46
Total	155,550		4,511,428		303,965,272	

Source: U.S. Census Bureau, American Community Survey

2010 5-Year Estimates



Population by Gender

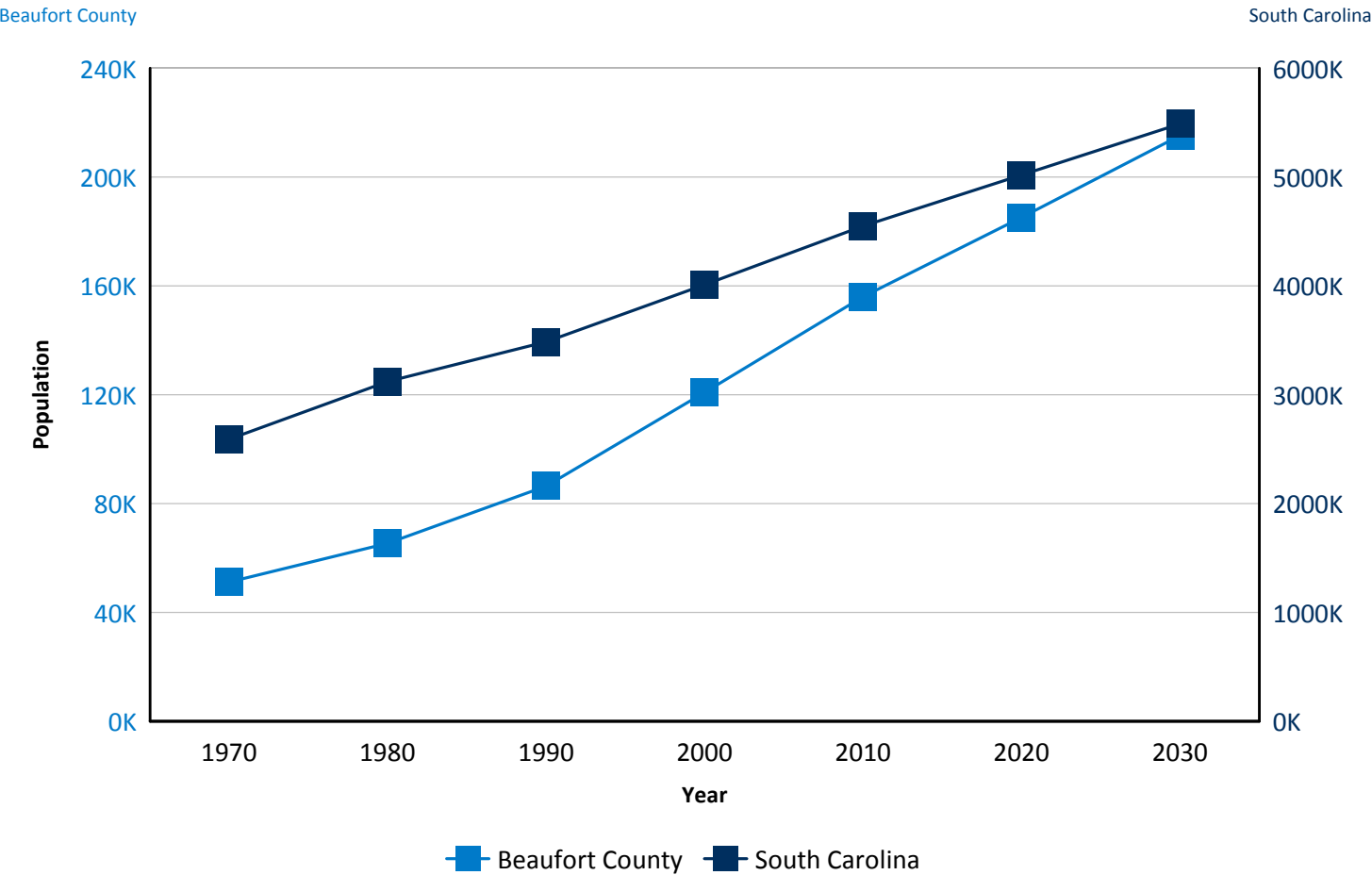
Gender	Beaufort County	South Carolina	United States
Male	77,133	2,195,677	149,398,724
Female	78,417	2,315,751	154,566,548
Total	155,550	4,511,428	303,965,272

Source: U.S. Census Bureau, American Community Survey

2010 5-Year Estimates

Population Change

Historical and Projected

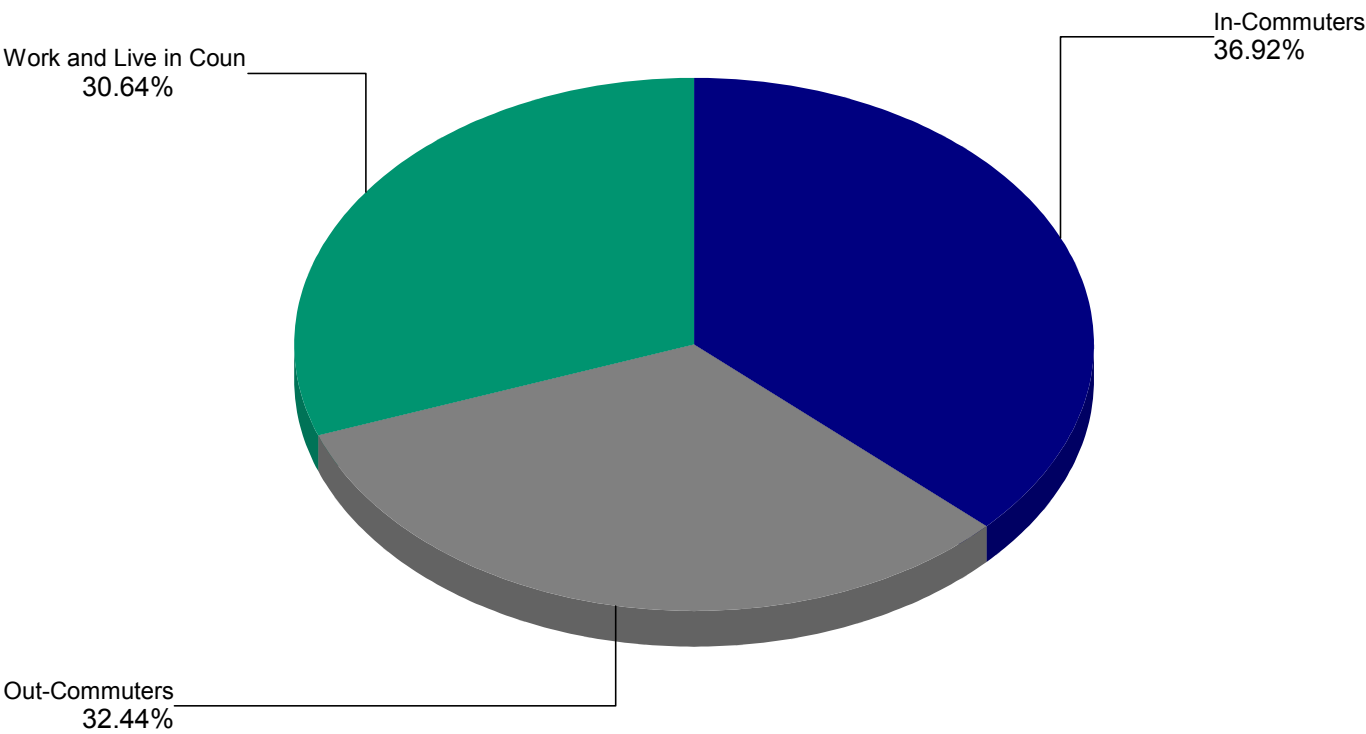


Source: U.S. Census Bureau

Year	Beaufort County	South Carolina
1970	51,136	2,590,713
1980	65,364	3,121,820
1990	86,425	3,486,310
2000	120,937	4,012,012
2010	156,070	4,549,150
2020	185,220	5,020,400
2030	215,270	5,488,460

Source: U.S. Census Bureau

Commuting Patterns



Source: US Census Bureau - 2000

Commuting Patterns	Workers
Work and Live in Coun	52,634
In-Commuters	63,411
Out-Commuters	55,711

Source: U.S. Census Bureau

2000

Top 10 Places Residents are Commuting To

Area	Workers
CHATHAM COUNTY, GA	1,135
Jasper County, SC	533
Hampton County, SC	219
Charleston County, SC	93
Colleton County, SC	74
Greenwood County, SC	58
Richland County, SC	48
Orangeburg County, SC	42
EFFINGHAM COUNTY, GA	39
Chester County, SC	34

Source: U.S. Census Bureau

2000

Top 10 Places Workers are Commuting From

Area	Workers
Jasper County, SC	3,501
CHATHAM COUNTY, GA	1,591
Hampton County, SC	1,213
Colleton County, SC	1,167
EFFINGHAM COUNTY, GA	427
Charleston County, SC	375
Allendale County, SC	145
BRYAN COUNTY, GA	109
LIBERTY COUNTY, GA	90
BULLOCH COUNTY, GA	88

Source: U.S. Census Bureau

2000

Employers by Size of Establishment

<u>Employees</u>	<u>Beaufort County</u>	<u>South Carolina</u>
0 to 4	2721	63,691
5 to 9	823	19,850
10 to 19	533	13,077
20 to 49	373	9,453
50 to 99	106	3,728
100 to 249	65	2,424
250 to 499	13	718
500 to 999	*	323
1000 +	*	263

Source: S.C. Department of Employment & Workforce - 2012 Q1

* Indicates that the requested data is suppressed

Employment by Size of Establishment

<u>Employees</u>	<u>Beaufort County</u>	<u>South Carolina</u>
0 to 4	4493	105,255
5 to 9	5408	131,233
10 to 19	7116	177,872
20 to 49	11158	290,049
50 to 99	7067	258,630
100 to 249	9613	364,970
250 to 499	4302	249,540
500 to 999	*	223,227
1000 +	*	651,738

Source: S.C. Department of Employment & Workforce - 2012 Q1

* Indicates that the requested data is suppressed

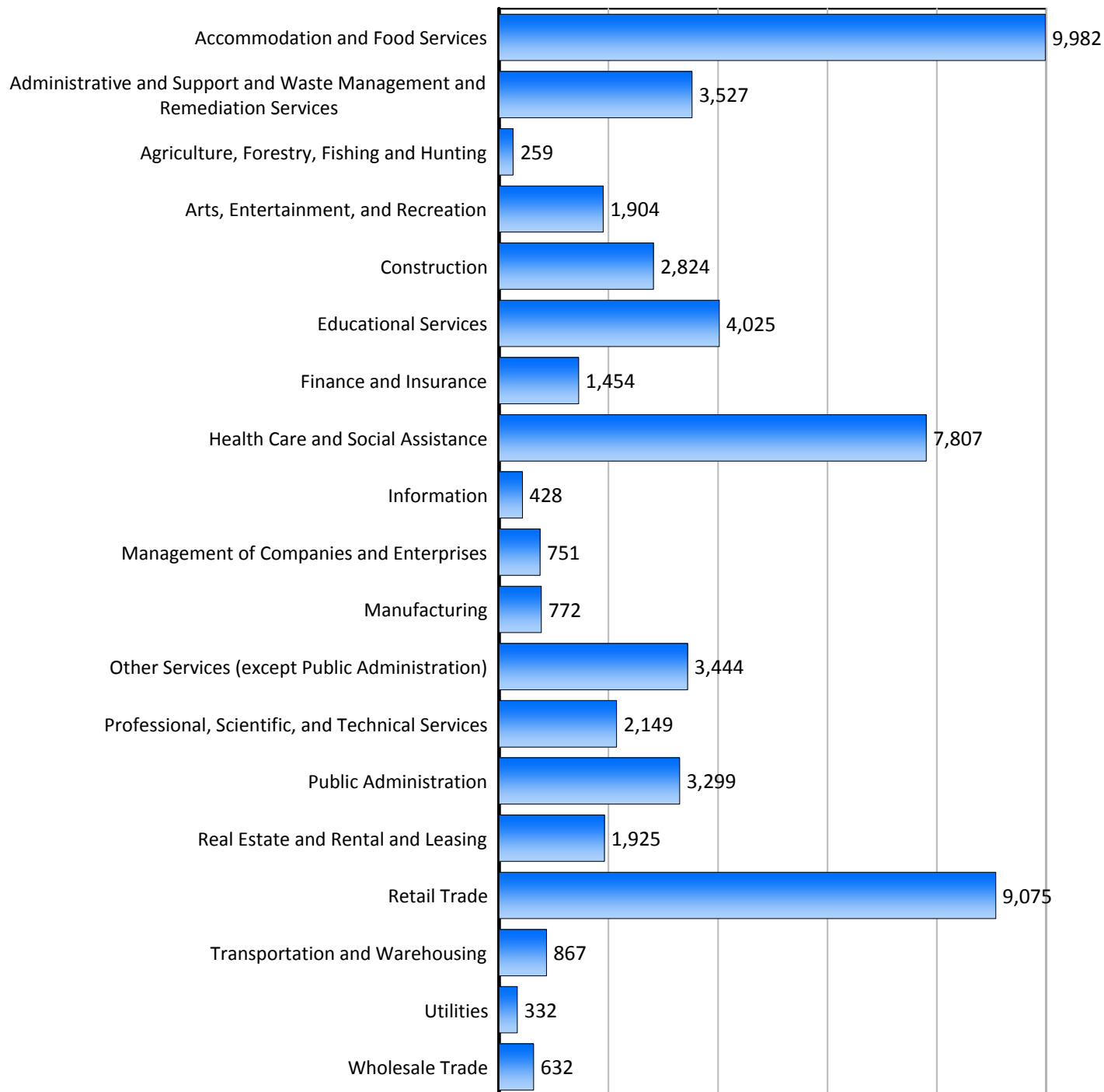
20 Largest Employers

(Listed Alphabetically)

ANNTAYLOR RETAIL INC
ARSC SERVICE CORPORATION
BEAUFORT COUNTY SCHOOL DISTRICT
BEAUFORT MEMORIAL HOSPITAL
CARECORE NATIONAL LLC
COUNTY OF BEAUFORT
CYPRESS CLUB INC.
DEPARTMENT OF DEFENSE
G M R I INC
HARGRAY COMMUNICATIONS GROUP INC
LOWES HOME CENTERS INC
MARINE CORPS COMMUNITY SERVICES
MARRIOTT RESORTS HOSP CORP
NATIONAL HEALTH CORPORATION
OS RESTAURANT SERVICES INC
PUBLIX SUPER MARKETS INC
SEA PINES RESORT LLC
TENET PHYSICIAN SVCS OF HILTON HEAD
THE GREENERY INC.
WAL-MART ASSOCIATES INC

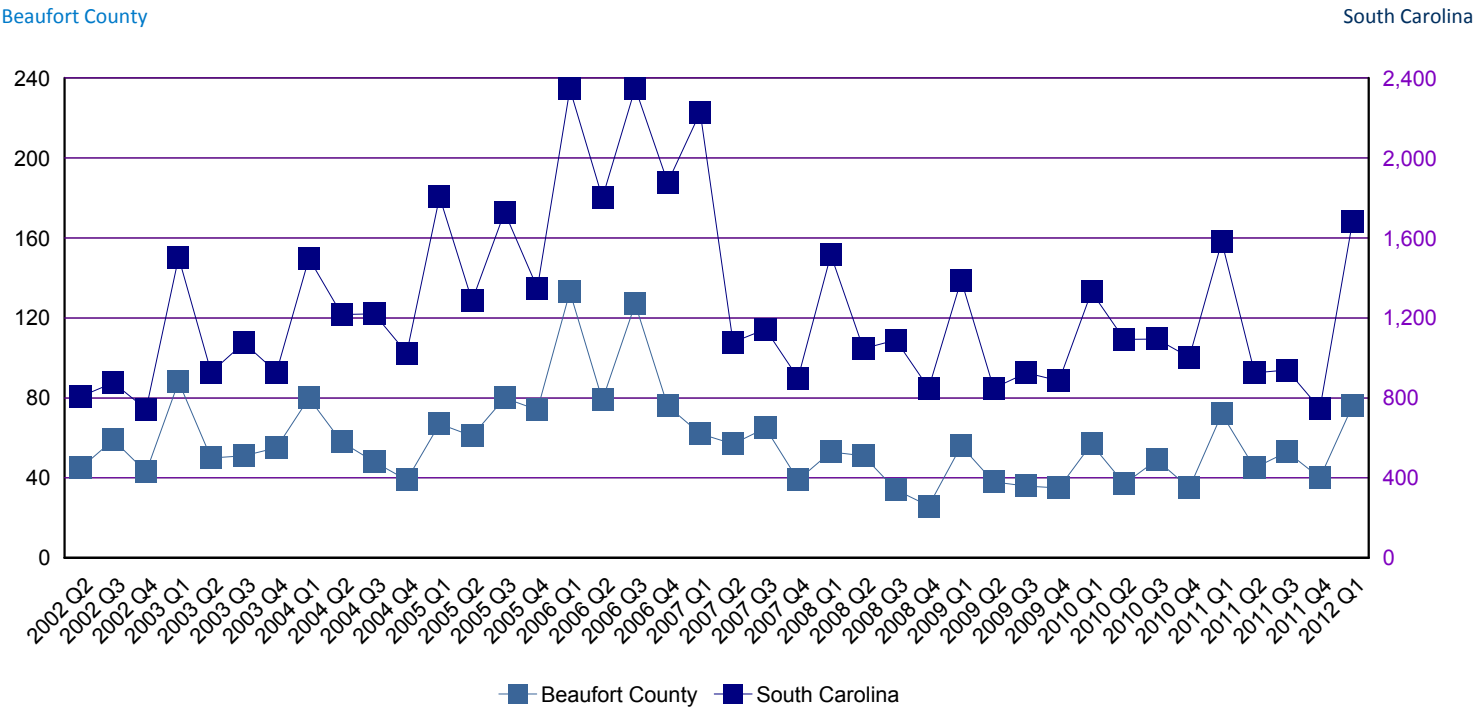
Source: S.C. Department of Employment & Workforce - 2012 Q1

Employment by Industry



Source: S.C. Department of Employment & Workforce
 Quarterly Census of Employment and Wages (QCEW) - 2012 Q1

New Startup Firms

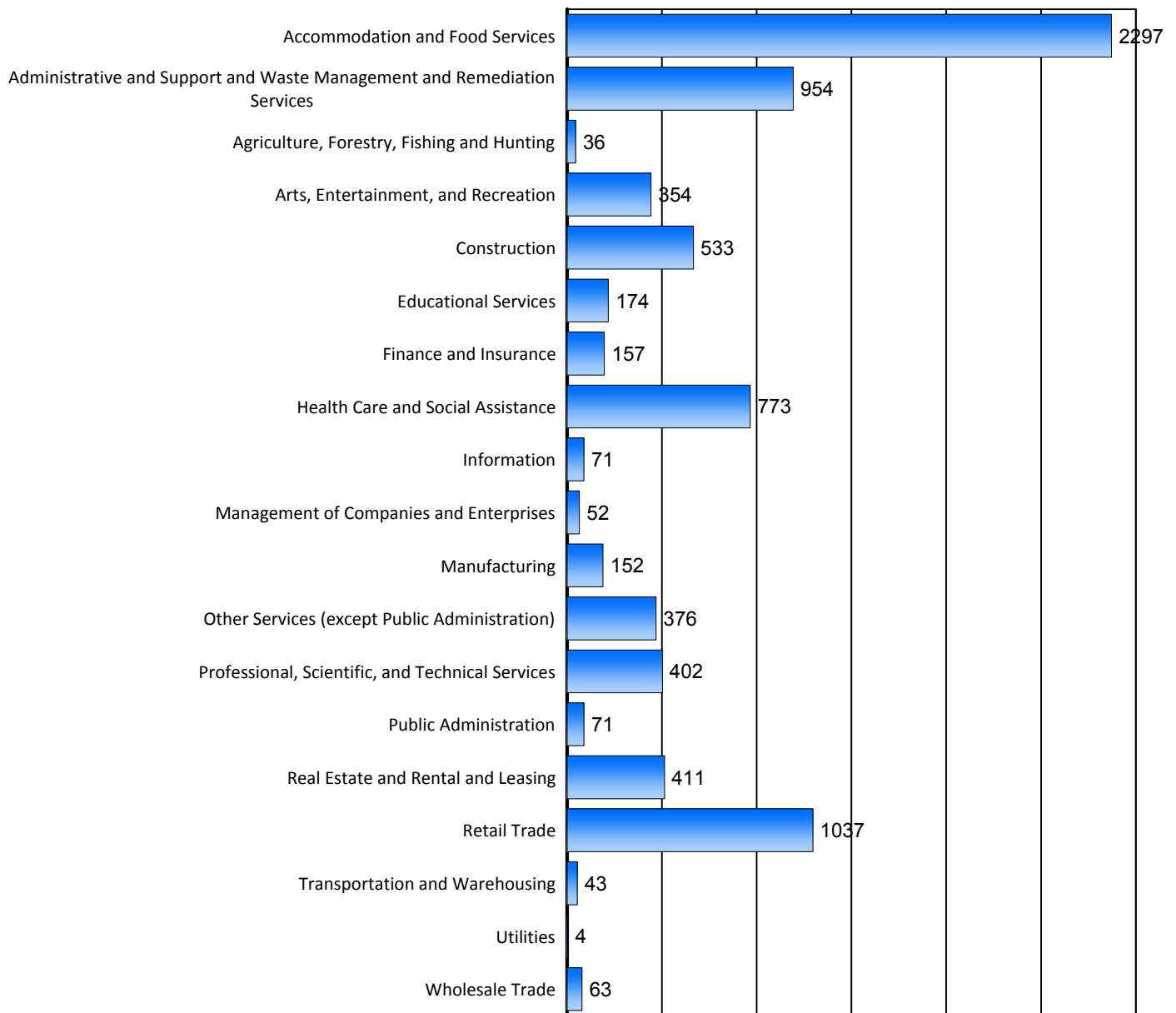


Quarter	Beaufort County	South Carolina
2012 Q1	76	1,680
2011 Q4	40	747
2011 Q3	53	939
2011 Q2	45	925
2011 Q1	72	1,580
2010 Q4	35	1,003
2010 Q3	49	1,095
2010 Q2	37	1,093
2010 Q1	57	1,330
2009 Q4	35	885
2009 Q3	36	925
2009 Q2	38	848
2009 Q1	56	1,389
2008 Q4	26	849
2008 Q3	34	1,089
2008 Q2	51	1,047
2008 Q1	53	1,515
2007 Q4	39	899
2007 Q3	65	1,143
2007 Q2	57	1,079

Note: A firm is included in the count when it does not have a UI Account Number in the previous quarter and has a Setup Date that falls in the quarter displayed.

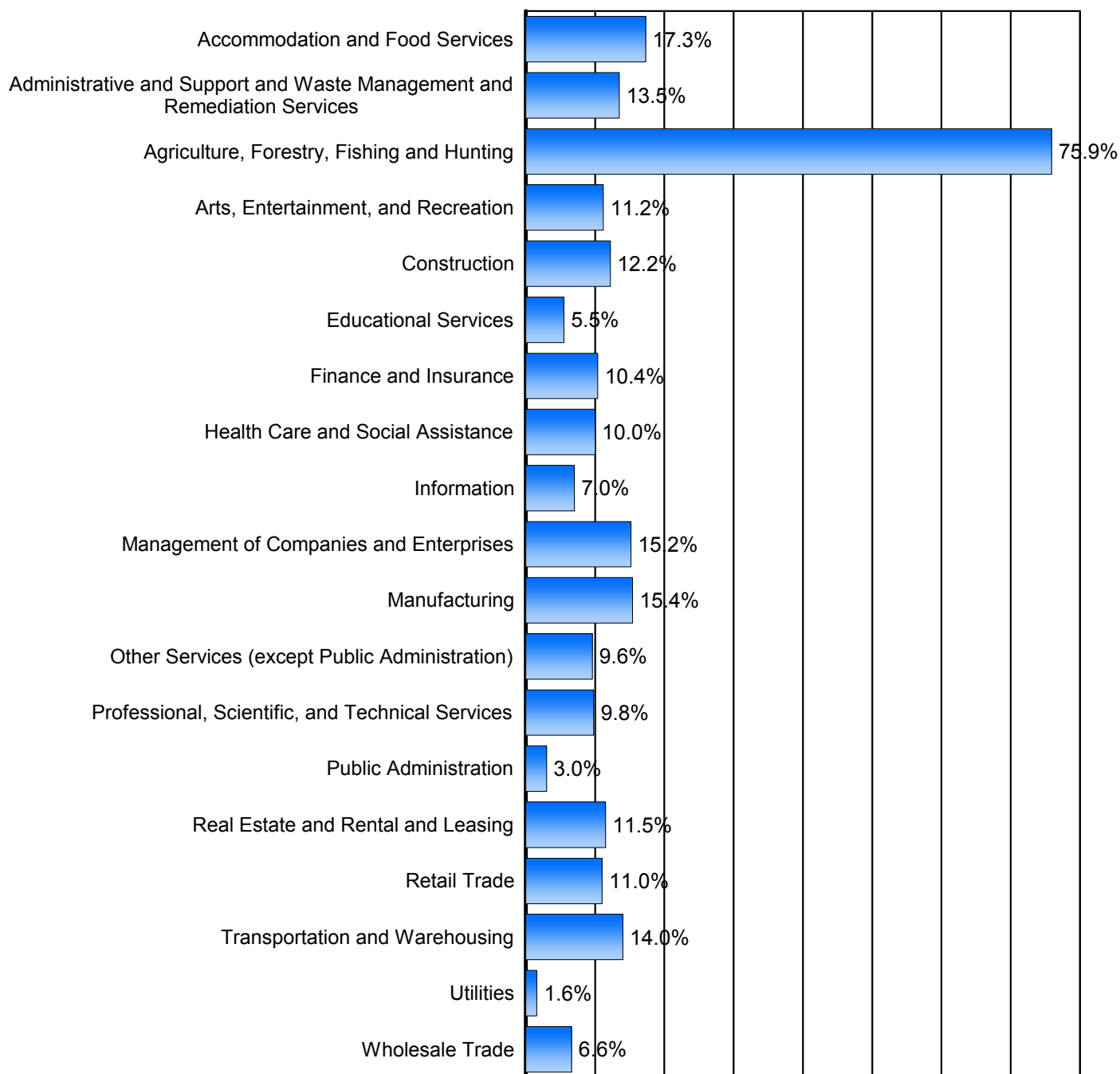
Source: S.C. Department of Employment & Workforce

New Hires by Industry



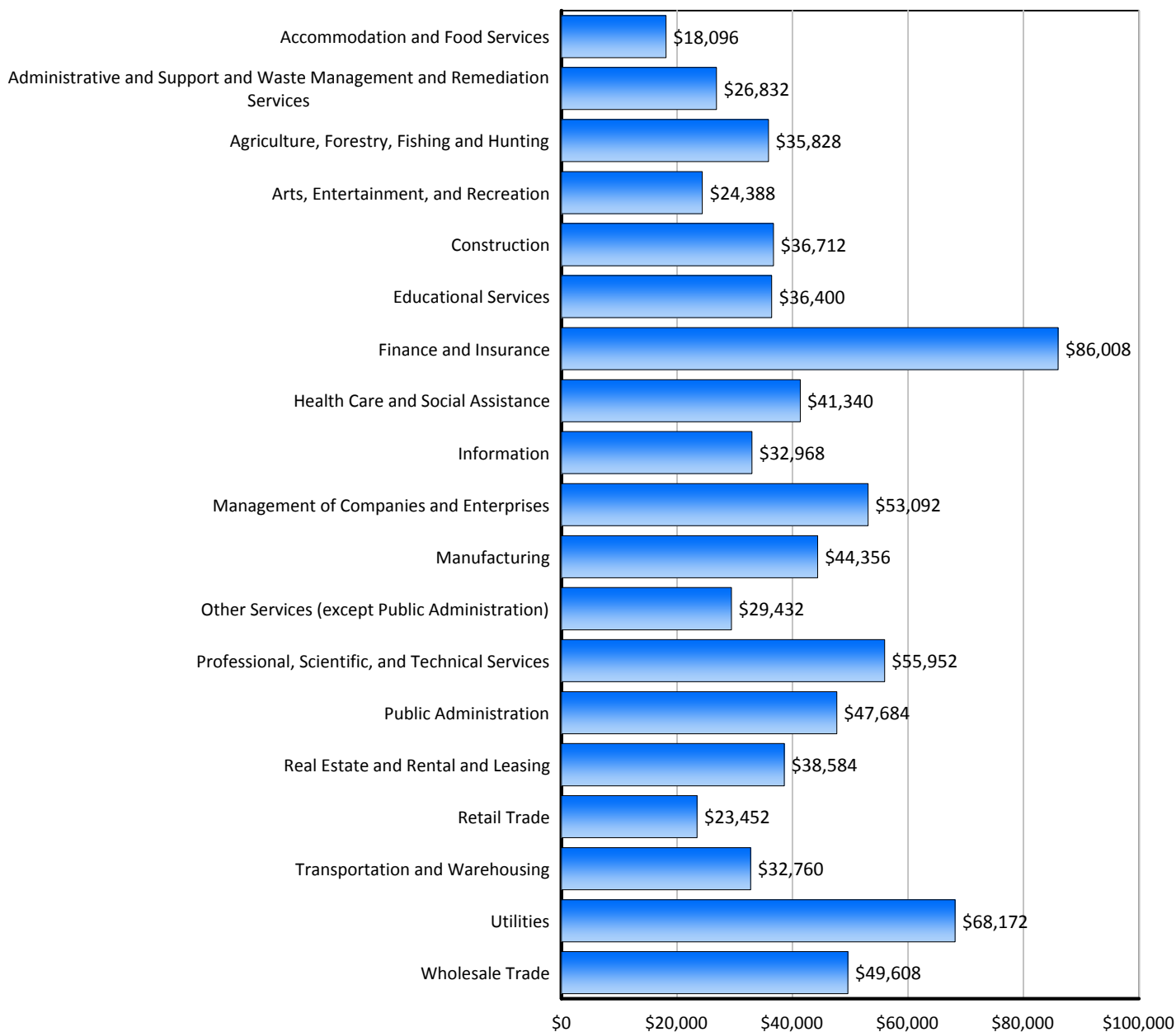
Source: U.S. Census Bureau, Local Employment Dynamics - 2010 Q1

Turnover by Industry



Source: U.S. Census Bureau, Local Employment Dynamics - 2009 Q4

Average Annual Wage by Industry



Source: S.C. Department of Employment & Workforce
 Quarterly Census of Employment and Wages - 2012 Q1

Age of Workers by Industry

Industry	14-18	19-21	22-24	25-34	35-44	45-54	55-64	65+
Total, All Industries	1,370	2,445	2,887	10,358	10,164	10,328	7,510	3,081
Agriculture, Forestry, Fishing and Hunting	3	11	10	57	37	41	41	18
Utilities	0	0	12	54	93	126	58	4
Construction	51	103	141	652	671	676	399	141
Manufacturing	11	25	32	152	187	192	114	39
Wholesale Trade	6	17	23	147	159	175	131	60
Retail Trade	337	718	666	1,550	1,329	1,461	1,077	504
Transportation and Warehousing	0	15	36	139	183	164	111	59
Information	37	44	29	177	177	189	97	22
Finance and Insurance	0	15	61	312	289	295	226	57
Real Estate and Rental and Leasing	32	42	79	415	432	442	422	252
Professional, Scientific, and Technical Servi	28	35	81	520	496	496	407	162
Management of Companies and Enterprises	7	17	37	114	102	81	42	19
Administrative and Support and Waste Manageme	100	174	208	725	760	755	403	235
Educational Services	9	9	95	723	873	1,021	1,012	260
Health Care and Social Assistance	35	128	266	1,280	1,415	1,494	1,161	302
Arts, Entertainment, and Recreation	57	56	94	345	334	362	320	309
Accommodation and Food Services	576	902	798	1,891	1,428	1,151	606	320
Other Services (except Public Administration)	73	98	148	603	636	642	504	244
Public Administration	5	32	70	502	566	564	379	75

Source: U.S. Census Bureau, Local Employment Dynamics - 2010 Q1

Labor Market Projections

Total Employment by Industry

(County Data Unavailable)

Note: Projections are available by Workforce Investment Area (WIA). The data displayed is selected from the appropriate WIA.

Lowcountry	2008	2018			
Industry	<u>Estimated Employment</u>	<u>Projected Employment</u>	<u>Change</u>	<u>Percent Change</u>	<u>Annual Percent Change</u>
Total Employment, All Jobs	98,403	110,322	11,919	12	1
Agriculture, Forestry, Fishing and Hunting	4,227	5,979	1,752	41	4
Utilities	469	428	-41	-9	-1
Construction	7,106	7,005	-101	-1	0
Manufacturing	3,394	3,517	123	4	0
Wholesale Trade	1,290	1,445	155	12	1
Retail Trade	13,017	14,281	1,264	10	1
Transportation and Warehousing	1,165	1,229	64	5	1
Information	937	1,009	72	8	1
Finance and Insurance	2,077	2,359	282	14	1
Real Estate and Rental and Leasing	2,899	3,418	519	18	2
Professional, Scientific, and Technical Services	3,013	3,512	499	17	2
Management of Companies and Enterprises	486	541	55	11	1
Administrative and Support and Waste Management and Remediat	4,645	5,408	763	16	2
Educational Services	6,393	6,770	377	6	1
Health Care and Social Assistance	8,945	11,332	2,387	27	2
Arts, Entertainment, and Recreation	2,500	2,916	416	17	2
Accommodation and Food Services	13,616	14,846	1,230	9	1
Other Services (Except Government)	5,660	6,461	801	14	1
Government	7,890	8,644	754	10	1

Source: S.C. Department of Employment & Workforce
Industry Projections

Labor Market Projections

Total Employment by Occupation

(County Data Unavailable)

Note: Projections are available by Workforce Investment Area (WIA). The data displayed is selected from the appropriate WIA.

Lowcountry	2008	2018			
Occupation	<u>Estimated Employment</u>	<u>Projected Employment</u>	<u>Annual Openings</u>	<u>Openings (Replace)</u>	<u>Openings (Growth)</u>
Total, All Occupations	98,403	110,322	1248	2,341	3,589
Management Occupations	5,697	6,368	68	127	195
Business and Financial Operations Occupations	2,692	3,146	47	51	98
Computer and Mathematical Occupations	596	686	9	12	21
Architecture and Engineering Occupations	826	902	8	17	25
Life, Physical, and Social Science Occupations	494	567	8	15	23
Community and Social Services Occupations	920	1,036	12	21	33
Legal Occupations	870	934	7	14	21
Education, Training, and Library Occupations	4,520	4,907	39	106	145
Arts, Design, Entertainment, Sports, and Media Occ	1,250	1,422	18	32	50
Healthcare Practitioners and Technical Occupations	4,366	5,462	110	91	201
Healthcare Support Occupations	2,404	3,124	72	27	99
Protective Service Occupations	2,771	3,176	41	79	120
Food Preparation and Serving Related Occupations	11,942	13,277	134	434	568
Building & Grounds Cleaning & Maintenance Occup.	8,627	9,575	95	130	225
Personal Care and Service Occupations	3,140	3,666	53	95	148
Sales and Related Occupations	12,672	14,257	160	376	536
Office and Administrative Support Occupations	12,894	14,134	137	270	407
Farming, Fishing, and Forestry Occupations	2,930	4,073	117	78	195
Transportation and Material Moving Occupations	5,221	5,583	40	117	157
Production Occupations	3,399	3,627	33	63	96
Installation, Maintenance, and Repair Occupations	3,700	4,059	38	77	115
Construction and Extraction Occupations	6,472	6,341	7	110	117

Source: S.C. Department of Employment & Workforce
Occupational Projections

Labor Market Projections

Growing Occupations

(County Data Unavailable)

Note: Projections are available by Workforce Investment Area (WIA). The data displayed is selected from the appropriate WIA.

Lowcountry	2008	2018	Openings				
<u>Occupation</u>	<u>Estimated Employment</u>	<u>Projected Employment</u>	<u>Percent Change</u>	<u>Replace</u>	<u>Growth</u>	<u>Total</u>	<u>Average Salary</u>
Dental Hygienists	184	255	39	4	7	11	\$63,763
Physical Therapist Assistants	31	43	39	0	1	1	\$58,008
Medical Assistants	397	548	38	4	15	19	\$28,629
Surgical Technologists	89	121	36	2	3	5	\$41,096
Cardiovascular Technologists and Technicians	28	38	36	0	1	1	\$55,412
Welders, Cutters, Solderers, and Brazers	61	83	36	2	2	4	\$32,566
Physical Therapists	155	207	34	2	5	7	\$75,822
Pharmacy Technicians	242	319	32	6	8	14	\$26,920
Personal Financial Advisors	108	143	32	1	4	5	\$65,028
Management Analysts	351	461	31	6	11	17	\$58,276
Medical and Public Health Social Workers	106	139	31	3	3	6	\$47,000
Diagnostic Medical Sonographers	54	71	31	1	2	3	\$59,311
Dental Assistants	134	175	31	3	4	7	\$36,898
Physicians and Surgeons, All Other	317	413	30	6	10	16	\$216,179
Registered Nurses	1,300	1,663	28	23	36	59	\$63,510
Police, Fire, and Ambulance Dispatchers	108	138	28	2	3	5	\$34,230
Hairdressers, Hairstylists, and Cosmetologists	255	323	27	4	7	11	\$28,496
Urban and Regional Planners	43	54	26	1	1	2	\$62,962
Respiratory Therapists	42	53	26	1	1	2	\$52,314
Public Relations Specialists	118	149	26	3	3	6	\$50,009

Occupations are sorted by highest estimated percentage growth from estimate year to projection year.

Source: S.C. Department of Employment & Workforce
Occupational Projections

Labor Market Projections

Declining Occupations

(County Data Unavailable)

Note: Projections are available by Workforce Investment Area (WIA). The data displayed is selected from the appropriate WIA.

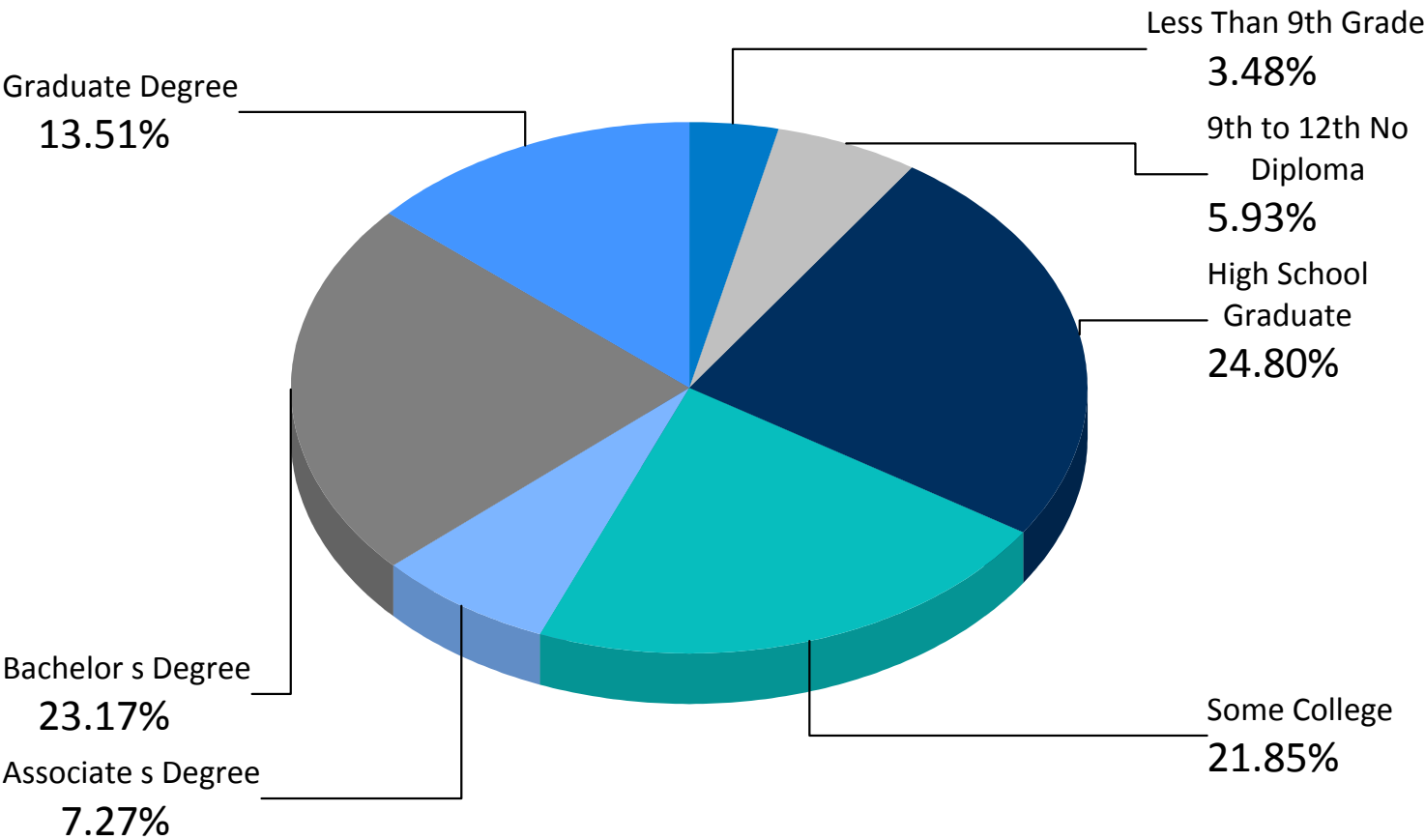
Lowcountry	2008	2018	Openings				
<u>Occupation</u>	<u>Estimated Employment</u>	<u>Projected Employment</u>	<u>Percent Change</u>	<u>Replace</u>	<u>Growth</u>	<u>Total</u>	<u>Average Salary</u>
Order Clerks	79	59	-25	2	0	2	\$25,796
File Clerks	86	66	-23	2	0	2	\$23,379
Postal Service Mail Sorters, Processors, and Prc	28	22	-21	0	0	0	\$32,613
Sewing Machine Operators	144	117	-19	1	0	1	\$20,365
Roofers	95	79	-17	2	0	2	\$31,803
Mail Clerks and Mail Machine Operators, Except	51	45	-12	1	0	1	\$35,622
Postal Service Clerks	63	56	-11	1	0	1	\$53,273
Data Entry Keyers	22	20	-9	1	0	1	\$33,851
Brickmasons and Blockmasons	151	137	-9	4	0	4	\$40,371
Human Resources Assistants, Except Payroll an	104	96	-8	3	0	3	\$34,790
Painters, Construction and Maintenance	402	373	-7	7	0	7	\$26,618
Cement Masons and Concrete Finishers	182	170	-7	5	0	5	\$66,218
Inspectors, Testers, Sorters, Samplers & Weighe	153	142	-7	3	0	3	\$27,803
Postmasters and Mail Superintendents	32	30	-6	1	0	1	\$59,537
Payroll and Timekeeping Clerks	128	120	-6	3	0	3	\$32,272
Switchboard Operators, Including Answering Ser	93	88	-5	2	0	2	\$24,132
Helpers--Production Workers	176	167	-5	3	0	3	\$23,143
Electricians	418	396	-5	10	0	10	\$45,280
Logging Equipment Operators	278	263	-5	8	0	8	\$33,640
Carpenters	1,141	1,095	-4	14	0	14	\$34,257

Occupations are sorted by highest estimated percentage decline from estimate year to projection year.

Source: S.C. Department of Employment & Workforce
Occupational Projections

Educational Attainment

(Population 25 Years and Older)

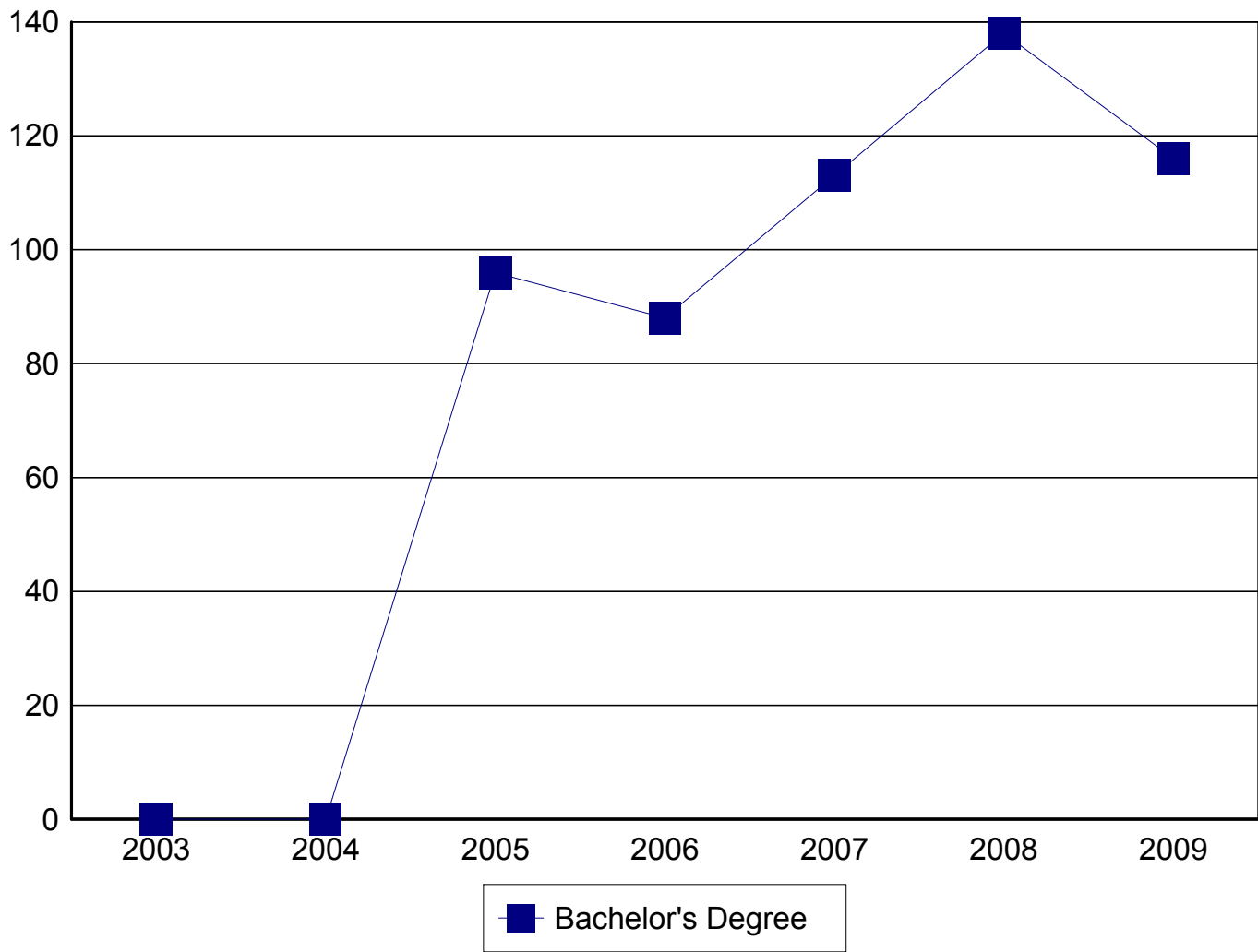


Less Than 9th Grade	3.48%
9th to 12th No Diploma	5.93%
High School Graduate	24.80%
Some College	21.85%
Associate's Degree	7.27%
Bachelor's Degree	23.17%
Graduate Degree	13.51%
Total:	100.00%

Source: U.S. Census Bureau, American Community Survey
2009 5-Year Estimate

Graduate Trends

(Based on Graduates from Area Schools)



Source: Institute of Education Sciences (IES), Integrated Postsecondary Education Data System

Educational Institutions

Technical College of the Lowcountry		University of South Carolina-Beaufort	
921 Ribaut Road		1 University Boulevard	
Beaufort, SC 29901		Bluffton, SC 29909	
800.768.8252		843.521.4100	
www.tcl.edu		www.uscb.edu	
2009	Degrees Awarded:	360	2009 Degrees Awarded: 121

Source: Institute of Education Sciences (IES), Integrated Postsecondary Education Data System